

Internet Explorer 7

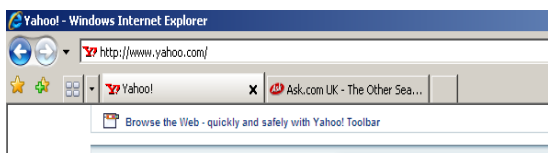
Typing an address into the address bar

Example:

- **Type** in: www.bbc.co.uk
- **Press** the **Enter** key



The **http://** in front of the address will be added automatically. Addresses are also known as Uniform Resource Locators (URLs).



If you reopen Internet Explorer 7 a new tab will appear in your original browser window.

You can close these tabs individually by:

- **Right clicking** on the tab you wish to close
- **Left clicking** close tab

Search Engines

Search Engines are websites that allow you to look for your items of interest.

We have several search engines on our Intranet Home Page which can be accessed by just one click, although there are many search engines on the Internet.

Here are some examples:

Google (<http://www.google.co.uk>) is an excellent starting point for searching the Internet

Finds nearest match to search words.



Yahoo (<http://www.yahoo.co.uk>)

Finds information in categories.



Ask: (<http://www.ask.co.uk>)

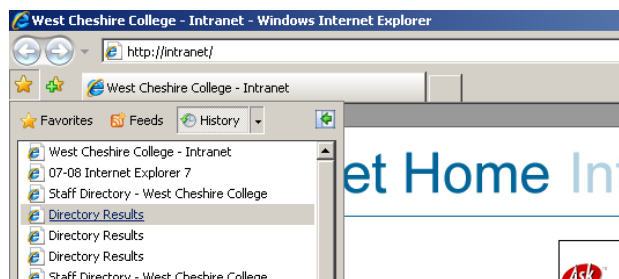


There are help guides on detailed searching in every Search Engine.

Viewing the History list

- **Click on the drop down arrow** at the end of the address line to view previous web site addresses.

On the college network, your history will be lost each time you log out, so previous sites will be available during your current session only.



Favourites

Favourites will only be stored on the computer you are working on. This is more useful for home computers or if you have a dedicated computer to work on.

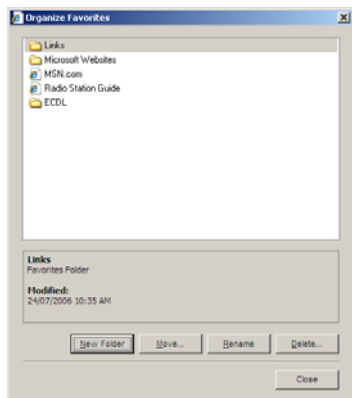


To **save** a website in your favourites, go to the website, e.g. www.bbc.co.uk/learning

Click on the star with a green plus and choose **add to favourites**



You can also organise your favourites into folders from here.



You can make new folders and put websites into them.