

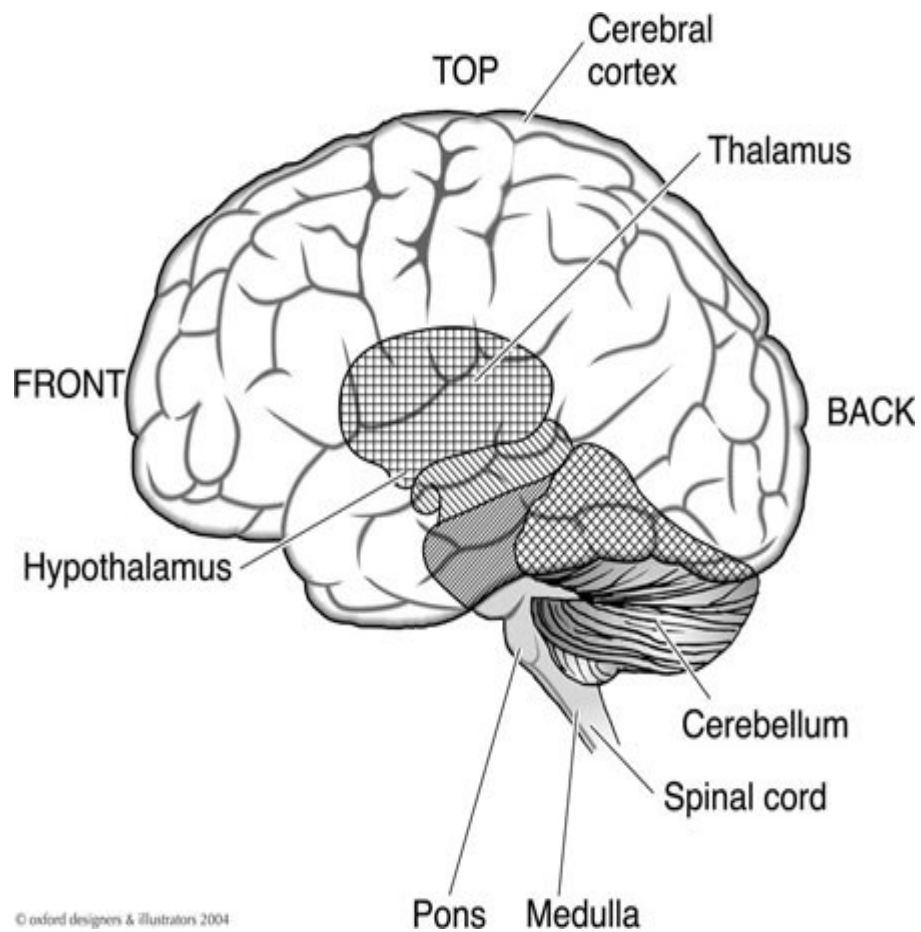


Learning Resources



Access and Education 2009/2010

Including: Teaching Assistance; Psychology;
Counselling; Criminology; Forensics





Online and on the shelves...

Welcome to all of our students! We hope you enjoy your time at the College and look forward to seeing you in our Learning Centres. We have resources to make your studying easier and quicker, using the most up to date and reliable materials available. If you need any help in locating items, simply ask us and we will be delighted to assist you.

Our Website

<http://library.west-cheshire.ac.uk/>

Use this website to search thousands of full text magazines, newspaper articles and many reference works.

The screenshot shows the 'Libraries and Learning Centres' website. The header includes the college logo and navigation links. The main content area is titled 'Your guide to the best of West Cheshire College's library resources - online, in digital & on the bookshelf'. It features a search bar, a list of subject areas, and a 'What is RSS?' section. A small image of a student is visible on the right side of the page.

One of the resources available here is Thomson Gale's **InfoTrac OneFile**, a comprehensive periodical resource that puts more than 39 million database records at researchers' fingertips.

Our electronic newspapers and journals are only available to the students and staff of West Cheshire College. You will be able to access them from home using your network username and password.



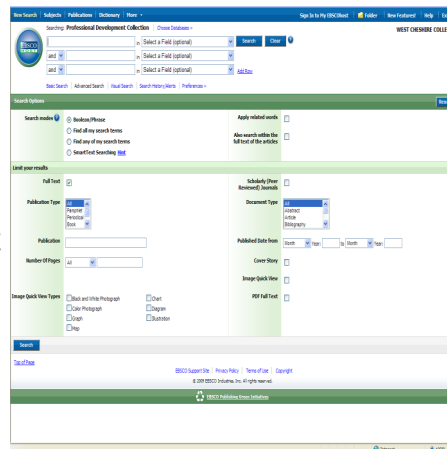
Our resources for you...

We have a wide range of resources for you to use — books, DVDs, videos, journals and newspapers. Online magazines are available 24/7 as electronic resources.

Special Collections include:



The Professional Development Collection is an important database, particularly of use for our Education students. It is a comprehensive collection of fulltext education journals.



Journals available in the Learning Centre include:

<i>Biological Sciences Review</i>	<i>Nursing Times</i>
<i>Times Educational Supplement</i>	<i>Adults Learning</i>
<i>New Scientist</i>	<i>Geography Review</i>
<i>Psychology Review</i>	<i>Special Children</i>

We keep back copies in stock if you wish to borrow them. If you cannot find what you are looking for, please ask us or use the library catalogue, available at:
<http://heritage.west-cheshire.ac.uk>



Where to find the books you need...

Subject	Class No
Adult education	374
Anatomy	611
APL	371.29
Bereavement	155.937
Biology	574
Counselling	361.06
Criminology	364
Further education	374
Geography	910
Higher education	378
History	940
Physics	530
Psychology	150
Psychology of teaching	370.15
Sociology	301
Stress: physiology	613.79
Stress: psychology	155.9
Teaching assistance	371.14124

Ellesmere Port Learning Centre

01244 670348

Chester Campus Learning Centre

01244 670574